



Three Mile Pond Association

Send all correspondence to:
Three Mile Pond Association
P.O. Box 178
So. China, Maine, 04358

e-mail: tmpa@threemilepond.org

For now, for the future - it's up to us to protect and preserve our pond.

Three Mile Pond Association
P.O. Box 178
So. China, ME 04358

«firstname» «lastname»
«add l»
«city», «st» «zip»

Three Mile Pond Association exists to preserve, protect and promote the benefits of a beautiful, clean pond for all to enjoy.

Membership is open to and encouraged for all watershed landowners and those abutting Three Mile Pond. But we also welcome all who have an interest in maintaining the quality of life that being "on the pond" affords, whether you're a nearby resident or far-away vacationer. If you would like to become a member of our association please contact us by email or write us at our Post Office box address.



THREE MILE POND ASSOCIATION

on the web at:
www.threemilepond.org
email: tmpa@threemilepond.org

BOARD OF DIRECTORS

President
Rick Hayden
rhayden61@juno.com
(207) 445-7010

Vice President
Eva Baughman
greenknoll@aol.com

Treasurer/Secretary
Donna Gunning
ggunning@fairpoint.net

Directors:

Vassalboro:

King Road:
Mike Warren

Park Lane:
Bob Woods

Windsor:

Pierce's Point Road:
Dan Dubord

Cunningham Road:
George Gunning

Casey Road:
Paul Breton
Keith George

China:

Park Lane:
Tom Whittaker

Fire Road 75:
Tony Pileggi

If you would like to receive future newsletters by email,
please send your email address to tmpa@threemilepond.org

The Pond Gazette

VOLUME IV, ISSUE I

SPRING 2010

President's Message

"Dear Neighbors,
Please send us interesting photos, via tmpa@threemilepond.org, taken in the Three Mile Pond watershed for your neighbors to enjoy. Photos will be posted on a link in our website. Hope to see you there, TMPA"

This past year our Membership declined by 32%, leaving us with only 39 members to accomplish the goal of completing the **Phosphorus Control Action Plan**. The phosphorus problem in TMP is not an easy fix as some might like to believe. In past years the lake was treated with Alum, but that is no longer an environmentally sound option. If you read the PCAP, on our website, you will find that the largest contributor to algae formation in TMP is the phosphorus already contained in the lake bottom sediment. Phosphorus is being emitted from the **sediment** into the water along with additional phosphorus from **land erosion**. The summer warm water temperature allows algae to feed on this phosphorus, thus the **algae bloom**.

Weber Pond and China Lake have outlet dams that allow them to flush out this phosphorus and algae in the fall, and the flushing seems to be helping to reduce and/or eliminate their algae problem. Last summer Weber Pond did not have an algae bloom!

We are also counting on the **Alewife** restoration project started by DEP, and added to our action plan, to continue to mitigate the algae problem. The China Region Lakes Alliance (CRLA) is applying for a grant to conduct a reparation project of Seaward Mill

Stream, the outlet stream for TMP, from the lake north to Route 3. This project will insure the migration of the Alewives. A study of the Alewife migration is now underway, and the Dept. of Marine Resources has been asked to stock TMP with Alewives. The TMPA is supporting the reparation project, and is also interested in retaining water at the lake outlet to insure an adequate amount of water for the fall Alewife migration, thus eliminating the possibility of another massive fish kill.

Starting in 2008, the TMPA Board of Directors has used the **DEP 2003 Phosphorus Control Action Plan** as a guide for activities, and brought this Action Plan to the attention of the CRLA. We have received CRLA support to move forward with studies, mitigation projects - that you will see ongoing around the lake this year, and citizen awareness and education. All of this needs YOUR SUPPORT to clean up our lake. As part of the CRLA, we are very fortunate to have the use of their Youth Conservation Corps (YCC) to do projects like rip-rapping, buffer strips, and various erosion control projects, and complimentary boat inspections that we contribute money to each year.

Because of the threat of invasion by the **11 most invasive aquatic plants**, the TMPA will pay for additional inspections of boats & trailers coming to TMP this sum-

mer. See additional information in this newsletter about what you can do to save TMP from **Invasion**.

After surveying camp roads last year and being informed of a disaster in Windsor, the TMPA decided that this should be "**The Year of the Camp Road**" and we are currently looking for Owners on camp roads to form formal "**Road Associations**" and to add the Association Presidents as Board Members to the TMPA. Having a formal Road Association will allow us to apply for grant money to start mitigation projects. Erosion on our Camp Roads is an ongoing source of Phosphorus intake to TMP, and very costly to mitigate. **Erosion Control is the most important action that we can take, in our watershed, to slow down the infiltration of phosphorus into Three Mile Pond.**

Thank you for supporting our association. We need your support, your input, and **your participation** to keep our pond an invaluable resource. If you're not yet part of our association, I urge you to consider becoming a member. Dues are reasonable and you owe it to yourself and your family to be a part of this great group of people who truly care about the place we call home.

Regards,
Rick



Annual Meeting - July 24, 2010

ATTENTION:

LANDOWNERS in Three Mile Pond Watershed

The Annual Meeting of the Three Mile Pond Association will be held on **SATURDAY, July 24, 2010 at 10:00am at Fox Glen Snowmobile Club** on Weeks Mills Road, Augusta.

We will serve coffee and goodies starting at 9:00am.

There will be two featured speakers this year. One from the Kennebec County Soil & Water Conservation District to speak about camp roads and their affect on lake water quality, and one from the Maine Volunteer Lake Monitoring Program to speak about Invasive Aquatic Plants. Please RSVP and let us know if you plan on attending by calling Rick at 207.445.7010 or emailing to tmpa@threemilepond.org.

Please plan to attend. Membership is open to all landowners in the watershed and anyone concerned with preserving this wonderful resource we call Three Mile Pond!

Membership In TMPA

The Three Mile Pond Association (TMPA) is interested in identifying and establishing contact with all shorefront and watershed property owners and those interested in the Three Mile Pond watershed for the purpose of communication, fact-finding, and the sharing and voicing of concerns and opinions relating to our pond and its environs. Your input is valued and needed. The best decisions to be made for the good of Three Mile Pond for the present and into the future can only be accomplished if all adjacent owners know the facts and have a voice. In order to accomplish this TMPA needs to be able to identify the owners and have a way

to contact them. This works best if there is a Road Captain to act as direct contact for the residents of each road. If you have email, please notify us of your current name, address and contact info at tmpa@threemilepond.org. Members are urged to participate as Road Captains and on the Board of Directors to bring projects to fruition.

BECOME A MEMBER!

Membership Dues:

**Standard Member:
\$20.00**

President's Club Member: \$150.

This year's President's Club members receive a beautiful limited-edition, numbered, wooden, hand carved hen, Common Merganser duck made by our own board member and master woodcarver,

George Gunning.

Additional donations are greatly appreciated.

Checks should be made payable to:

**Three Mile Pond Association
P.O. Box 178
So. China, ME 04358**

Please join the Three Mile Pond Association!



How You Can Protect Our Pond

It has been shown that shorefront property value is determined by water quality. Improve water quality and property values rise; degrade water quality and property values decline. A property on Three Mile Pond is a valuable asset. Take time to learn how to protect your investment by protecting water quality. Here are seven suggestions that can help maintain your investment:

1. **Avoid all phosphorus containing fertilizers.** Phosphorus drives the algae bloom.
2. **Improve your shorefront buffer strip!** Lawns allow more soil runoff than natural vegetation. Try not cutting the 10 feet of lawn closest to the lake or ask for a free buffer strip consultation from our association.
3. **Have your shorefront septic system holding tank pumped every 2 - 3 years.** This improves the life of your system.
4. **Form a camp road association to better maintain your road.** A well-maintained road is less likely to erode and contribute phosphorus to the pond. **SEE THIS NEWSLETTER.**
6. **Become an Invasive Plant Patroller.** Take a basic workshop to learn how to recognize invasive aquatic plants on Maine's "[eleven most unwanted](#)" list, and to distinguish these invaders from their native Maine look a likes. **SEE THIS NEWSLETTER.**
7. **Join the Three Mile Pond Association and help us work to improve and protect water quality.** Your tax deductible contribution will be used to continue water quality improvement and protection work.

Town of China Shoreland Septic System Compliance Program

Existing subsurface wastewater disposal systems within all Shoreland Districts:

Beginning July 1, 2009, the owners of property within any Shoreland District in the Town of China as designated on the officially adopted China Land Use District Map and on which is located a subsurface wastewater disposal system (hereinafter Shoreland Owner) shall provide the Local Plumbing Inspector (LPI) with proof that the subsurface wastewater disposal system located on this land has been permitted, installed, inspected and approved by the Town's present LPI, or a prior LPI for the Town, no earlier than January 1, 1998.

Those HHE-200 design forms with plumbing permit stickers and inspection approvals signed by a present or past LPI subsequent to January 1, 1998 shall be deemed proof that the subsurface wastewater disposal system has been permitted, inspected and approved as required. For the purposes of this section the Town may require any replacement septic system design to be recorded at the Kennebec County Registry of Deeds in accordance with those forms made available for said purpose by the Maine Department of Human Services' Division of Environmental Health.

Please visit the China Town Office to see the entire ordinance.

Camp Roads and Water Quality

Q: What is the link between camp roads and water quality?

A: Stormwater runoff pollution resulting from soil erosion is one of the most significant problems contributing to the decline in water quality being experienced in many of our lakes and streams. It has been estimated that up to 85% of all erosion and sedimentation problems in lake watersheds originate from improper construction and maintenance of camp roads. Soil erosion is the single largest pollutant (by volume) to our lakes, rivers and streams. Implementation of proper camp road maintenance practices helps to prevent this form of pollution and preserve our surface water resources.

Q: How does camp road erosion harm our lakes?

A: The most obvious effect of erosion is the brown color that results from suspended soil particles in the water. A somewhat less obvious effect is the green/murky color a lake turns long after the brown is gone. This green color results from excessive algae growth, which is nourished by the influx of nutrients (primarily phosphorus) attached to the eroded soil. These soil particles can also smother spawning and feeding grounds of fish. Other effects include: Gradual filling of desirable shoreline (i.e., encroachment of weeds). Depleted dissolved oxygen levels from excessive algae growth, resulting in the loss of desirable cold water fish species. Diminished recreational, aesthetic, and property values resulting from a decline in water quality.

Q: How can we stop our camp roads from ruining our water resources?

A: The answer is maintenance. Eroding camp

roads are not maintained at a level that allows them to hold up to the forces of vehicle traffic and weather. As a result these roads degrade to the point where fixing them properly can be very expensive. Akin to an old car with high miles, there are two options;

- 1) spend a little money each year on repairs and run it into the ground or
 - 2) spend a large amount of money on something newer that will be cheaper to maintain.
- Many camp road owners take the first approach to road maintenance and are literally running their road into the ground. Once a road is run into the ground, small repairs or band aids aren't going to cut it, major repairs are needed. Major repairs are expensive, but after the initial expense yearly maintenance will be much cheaper. Once a road is upgraded, proper yearly maintenance will make it last for many years before major repairs are needed again. In many cases a large upfront expense can be too much to bear for camp road owners. In this case a strategy must be developed to prioritize maintenance work within the road owners budget. This should be a long-term strategy concentrating resources on the worst sections of the road until there are no more "bad" sections.

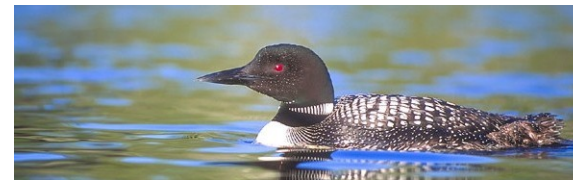
Q: How do I know what my road needs?

A: Many contractors know how to properly build a road, and they know that it costs money. Often, they have a limited budget to work with and can only do so much. Some contractors have taken a course through the Maine Department of Environmental Protection certifying that they have knowledge of erosion control practices. For a list of these contractors go to: <http://www.state.me.us/dep/blwq/training/cccec.htm> Your local Soil and Water Conservation District (SWCD) can also provide you with some assistance in prioritizing road mainte-

nance work. If you are a do-it-yourself type of person you can prioritize maintenance yourself using the Camp Road Maintenance Manual as a guide. For a copy of this manual contact your local SWCD.

Central Maine residents can contact Nate Sylvester @ 622-7847 ext 3 for assistance.

Source : "The Camp Road Maintenance Manual," developed by the KCSWCD, rev. 2000



LOON Calendar

April

Common Loons return to Maine's lakes right after ice out, and spend about a month establishing their territories and bonding with their mate.

Watch for pairs of loons exhibiting courtship displays like dipping their bills in the water or swimming around each other in circles.

May-June

Loons build their nests of dead vegetation and mud right on the shoreline, away from wind, waves, people, and predators. They often nest on small islands where there are fewer predators and people.

Watch for single birds in quiet, shallow coves and near islands, since parents must take turns sitting on the eggs.

July-August

After about 27 days, the eggs hatch and the loon family moves to a nearby "nursery" area. The loons parents spend much of their time catching small fish for hungry chicks. Chicks ride on their parents' backs to stay warm and safe from predators.

Watch for pairs of loons with one or two small chicks in tow or on their backs. The chicks are quite small when they first hatch, so may be difficult to see.

September-October

Most chicks can now feed themselves and fly. Their parents leave them to congregate in large groups, or "rafts". Groups of chicks will gather together later in the fall in "rafts" of their own.

Watch for large gatherings of loons on lakes and ponds. Adult loons may be molting into their dull gray and white winter plumage so may look very similar to the drab but full-grown juveniles.

November-March

Loons spend the winter resting and feeding along the coast. Juvenile loons will wait about seven years before they return to fresh water to breed.

Watch for the dull gray and white plumage of wintering adults and juveniles close to shore all along the coast of Maine.

Maine Audubon

www.maineaudubon.org
(207) 781-2330

If Three Mile Pond Were To Become Infested With Invasive Aquatic Plants, Up To 25 % Of The Lake Would Be Unusable!!!

Invasive Plant Patrollers

Invasive Plant Patrol

One of the primary outreach programs of the VLMP's [Center for Invasive Aquatic Plants](#) is the "Invasive Plant Patrol" (IPP). The IPP program promotes prevention, early detection and rapid response at the local level by providing training, educational materials, resources and technical support to groups and individuals across the State of Maine. To date over 1650 individuals (volunteers, state agency personnel, professionals, teachers, students and others) have participated in IPP workshops. The basic workshop teaches participants how to recognize the invasive aquatic plants on Maine's "[eleven most unwanted](#)" list, and to distinguish these invaders from their native Maine look a likes. A variety of advanced training opportunities are offered. [List of lakes with Certified Invasive Plant Patrol Monitors](#)



Invasive Plant Patrol workshops are offered free of charge to participants, and made possible through the generous support of Maine Department of Environmental Protection the Maine Lake and River Protection Sticker program, The Betterment Fund, Horizon Foundation, Maine Community Foundation and the donations of local sponsors. Though anyone interested in learning about aquatic invaders is welcome to participate the workshops, we encourage those who wish to become active members of Maine's early detection team to make a formal commitment to the statewide endeavor by becoming a Certified IPP Volunteer.

The goal of the IPP Certification Program is to encourage and support individual and group commitment to annual collection and submission of invasive aquatic plant screening survey data. To become a Certified Plant Patroller you must have participated in at least one Basic IPP workshop (or equivalent training), complete the [application](#) and sign a statement of commitment. The Maine Center for Invasive Aquatic Plants will provide all certified patrollers with standardized field sheets, an ID card, and a bucket scope.

About the Workshops



Invasive Plant Patrol
Field Workshop

The workshops are funded in through the Maine Lake and River Protection Sticker program and the donations of local sponsors, and are offered free of charge to participants. Though anyone interested in learning about aquatic invaders is welcome to participate the workshops, we encourage those who wish to become active members of Maine's early detection team to make a formal commitment to the statewide endeavor by becoming a Certified IPP Volunteer. Requirements for certification include participation in a basic IPP workshop and the submission of survey data on an annual basis. If you are interested in attending an IPP workshop and/or joining the volunteer team, please contact [MCIAP](#). Check out our [workshop schedule](#) for all our workshop offerings.

If you or your group is interested in hosting or sponsoring a workshop, please contact us at 207-783-7733 or mciap@mainevlmp.org.

Workshop Summaries

Invasive Plant Patrol Workshops for New Volunteers
The primary goal of this comprehensive, 5 ½ -hour workshop is to provide those who wish to join Maine's "early detection" effort with information and guidance needed to get started. All IPP training sessions are open to the public and FREE to anyone interested in learning more about the threat of invasive aquatic plants in Maine.

The workshop is presented in four parts:

- ▶ Overview of invasive species issues in Maine and beyond
- ▶ Plant identification fundamentals
- ▶ Plant identification hands-on exercise with live plants
- ▶ Conducting a screening survey, tools and techniques

All workshop participants receive an "Invasive Plant Patroller's Handbook," and [Maine's Field Guide to Invasive Aquatic Plants](#).

Advanced Plant Identification

Two distinct workshops are offered, each focusing on a different aspect of aquatic plant life and the identification of different plant groups (primarily native plants). Attend one, the other, or BOTH! Hone your identification skills with live specimens. Bring plants from your favorite lake, pond or stream to identify and share with others. Previous exposure to plant identification (e.g., attending an Introductory IPP workshop) is helpful, but not required.

Manual Control Methods for Invasive Aquatic Plants I & II

If invasive plants are not removed, contained and disposed of properly, the removal project may cause more harm than good. Two distinct control workshops are offered. The first is an introduction to manual control projects in Maine, and provides spe-

cific instruction and in-lake practice for those who plan to participate in manual harvesting and benthic barrier projects. The second workshop focuses on diver assisted suction harvesting equipment and techniques. These workshops are geared for certified SCUBA divers and non-divers who plan to provide surface support for control projects.

Survey Field Methods for Invasive Aquatic Plant Screening

This workshop is for those who have already attended the basic IPP training and would like some guided field experience before setting off to conduct an invasive plant screening survey. Bring your own shallow draft boat or contact VLMP to make alternative boating arrangements. Previous attendance of an Introductory IPP workshop is recommended but not required.



The Invasive Plant Patrol workshops are made possible by boater participation in the Maine Lake and River Protection Sticker program. Thank you for helping to keep Maine lakes free of invasive aquatic plants!
Maine Volunteer Lake Monitoring Program
vlmp@mainevlmp.org
24 Maple Hill Road,
Auburn, ME 04210
(207) 783-7733



Camp Roads

FORMING A ROAD ASSOCIATION

Managing maintenance on private or camp roads that serve multiple users can be difficult. Questions about ownership, liability, and maintenance costs can become very complicated and cause hard feelings between neighbors. Forming a road association can be an effective means of avoiding or addressing these problems. By establishing a road association you can:

1. centralize decision making;
2. open lines of communication among members;
3. legitimize the collection of members dues;
4. set up an impartial means for managing money;
5. establish legal authority (if necessary); and potentially avoid personal liability.

Road associations can be loosely formed or highly organized. Generally, the more organized the association, the easier it is to maintain the road and share the cost. A good option for road associations is to incorporate as a non-profit corporation with the State of Maine and to develop a set of rules by which you will do business (by-laws). The primary purpose for incorporating is to protect individuals from personal liability. If an accident occurs (gross negligence aside), instead of an individual being held liable, the incorporated association would be liable.

One of the best places to visit for detailed information is here:

<http://www.maine.gov/dep/blwq/docwatershed/roadassociation.htm>

INCORPORATING AS A NON-PROFIT

Following are some steps to follow to form a non-profit corporation:

1. Discuss incorporating ahead of time with all the landowners that benefit from the road. This gives people an opportunity to ask questions, express concerns, and it gives you the opportunity to discuss the benefits.
2. Notify landowners at least 30 days ahead of time - preferably in writing - of the meeting to discuss and vote for incorporation.
3. Hold the meeting. Be sure to have a clear agenda and stick to it. Set aside plenty of time for discussion, and take accurate minutes.
4. Vote. A majority vote is necessary to pass a motion to form your non-profit corporation. If a majority of the landowners vote for incorporation, visit the Secretary of State's website here:

<http://www.maine.gov/sos/cec/corp/nonprofit.html>

Complete the form entitled "Non-Profit Corporation, State of Maine, Articles of Incorporation." This form can be obtained from the Maine Secretary of State at 101 State House Station, Augusta, Maine 04333-0101 (Tel: 207-624-7736). There is a small annual filing fee. If your

annual gross receipts are normally less than \$5,000, your non-profit organization is exempt from paying income tax under Section 501(c)(3) of the Internal Revenue Code. If your annual receipts are over \$5,000, you can apply to the IRS for exemption designation using form 1023.



By-Laws

Your next step is to adopt by-laws and elect officials. Topics covered by the by-laws should include items such as:

- A purpose statement (describe the location of your private road and that you have formed for the purposes of maintaining the road);
- membership (who is eligible to be a member and vote);
- dues;
- election of officers;
- duties of directors and officers; and
- meetings.

By-laws should be tailored to each association's needs, so you may want to consider hiring a lawyer experienced in private road agreements to help you set up your by-laws.

The State of Maine has a Private Way Law (<http://janus.state.me.us/legis/statutes/23/title23ch305sec0.html>),

Subchapter II).

The law allows landowners to underwrite necessary maintenance costs and establishes an enforcement process for collecting dues. To qualify under this law, a private road must:

- provide access to four or more parcels of land;
- benefit three or more different landowners;
- have three or more parcel owners who agree to file; and
- not be a road constructed or primarily used for commercial or forest management purposes.

Essentially, this law allows for the recouping of maintenance costs, but specific procedures must be followed so landowners have the opportunity to vote on proposed maintenance projects. If an owner neglects to pay his or her dues, the money (plus costs and attorneys fees) may be recovered in a civil action.

(Excerpted from "Camp Road Maintenance Manual, A Guide for Landowners"; developed by Kennebec County Soil and Water Conservation District with assistance from the Maine Department of Environmental Protection; June 2000)

Kennebec County Soil and Water Conservation District

21 Enterprise Drive, Suite #1
Augusta, ME 04330

Phone: (207) 662-7847 Ext 3

Fax: (207) 626-8196

Ask for Josh Platt. Josh@kcsxcd.org